

Collection 22

Colours and Materials



EN – Collection 22

Composition	100 % Polyester
Width.....	150 cm
Weight.....	~ 680 g/per linear metre
Abrasion resistance (12 kpa).....	Martindale 80.000 cycles
Pilling Resistance EN 12945-2.....	4 - 5
Light fastness EN ISO 105-B02:1999 · 2	5 - 7 (Scala 1-8)
Fastness to rubbing EN ISO 105-X12:2002.....	4 - 5 dry and wet (Scala 1-5)
Flame resistance.....	EN 1021 > part 1+2 (Cigarette + flame test)

FR – Collection 22

Composition	100 % Polyester
Largeur	150 cm
Poids.....	~ 680 g/ml
Résistance à l'abrasion (12 Kpa).....	Martindale 80.000 tours
Pilling Resistance EN 12945-2.....	4 - 5
Résistance à la lumière.....	5 - 7 (Scala 1-8)
Résistance aux frottements.....	4 - 5 sec et humide (Scala 1-5)
Résistance au feu.....	EN 1021 > partie 1+2 (test cigarette + flamme)

IT – Collection 22

Composizione.....	100 % Poliestere
Altezza	150 cm
Peso	~ 680 g/metro lineare
Resistenza all'abrasione (12 Kpa)	80.000 cicli Martindale
Resistenza al pilling EN 12945-2.....	4 - 5
Resistenza alla luce.....	5 - 7 (Scala 1-8)
Resistenza allo sfregamento.....	4 - 5 secco e umido (Scala 1-5)
Comportamento al fuoco.....	EN 1021 > part 1+2 (Sigaretta + test reazione al fuoco)

PT – Collection 22

Composição	100 % Poliéster
Largura.....	150 cm
Peso	~ 680 g/por metro linear
Resistência à abrasão (12 Kpa).....	Martindale 80.000 ciclos
Resistência ao borboto EN 12945-2.....	4 - 5
Resistência à Luz EN ISO 105-B02:1999·2.....	5 - 7 (Scala 1-8)
Resistente à Temperatura.....	4 - 5 seco e húmido (Scala 1-5)
Resistência ao fogo.....	EN 1021 > partes 1+2 (teste do cigarro + cinza)

DE – Collection 22

Zusammensetzung.....	100 % Polyester
Breite	150 cm
Gewicht	~ 680 g/lfm
Scheuerverhalten (12 Kpa).....	Martindale 80.000 Touren
Pilling Beständigkeit EN 12945-2.....	4 - 5
Lichtechtheit EN ISO 105-B02:1999 · 2	5 - 7 (Skala 1-8)
Reibechtheit EN ISO 105-X12:2002	4 - 5 trocken und nass (Skala 1-5)
Brandverhalten	EN 1021 > Teil 1+2 (Zigaretten- und Streichholzflammtest)

NL – Collection 22

Samenstelling.....	100 % Polyester
Breedte	150 cm
Gewicht	~ 680 g/per m
Scheurvastheid (12 Kpa)	Martindale 80.000 toeren
Pilling bestendigheid EN 12945-2.....	4 - 5
Lichtechtheid EN ISO 105-B02:1999 · 2	5 - 7 (Scala 1-8)
Wrijfbestendigheid EN ISO 105-X12:2002	4 - 5 droog en nat (Scala 1-5)
Brandvastheid	EN 1021 > deel 1+2 (sigaret + brandvastheid)

ES – Collection 22

Composición.....	100 % Poliéster
Ancho	150 cm
Peso	~ 680 g/metro lineal
Resistencia a la abrasión (12 Kpa)	80.000 ciclos Martindale
Resistencia al pilling (bolitas) EN 12945-2.....	4 - 5
Resistencia a la luz EN ISO 105-B02:1999 · 2	5 - 7 (Scala 1-8)
Resistencia al roce EN ISO 105-X12:2002	4 - 5 seco y húmedo (Scala 1-5)
Resistencia al fuego.....	EN 1021 > partes 1+2 (test de cigarrillo y cerilla)



Please be aware that the PDF colour shades can appear different from the real fabric colours.

HAWORTH®

- Benelux** · Haworth Benelux B.V. · Tel. +31 8828 770 60
- Czech Republic** · Haworth Czech s.r.o. · Tel. +420 2726 572 40
- France** · Haworth S.A.S. · Tel. +33 1456 445 00
- Germany** · Haworth GmbH · Living Office · Tel. +49 5042 501 0
- Hungary** · Haworth Hungary Kft. · Tel. +36 1201 401 0
- Ireland** · Haworth Ireland Ltd. · Tel. +353 1855 884 0
- Portugal** · Haworth Portugal SA · Tel. +351 2143 450 00
- Spain** · Haworth Spain Ltd. · Tel. +34 9139 804 80
- Switzerland** · Haworth Schweiz AG · Tel. +41 6276 551 51
- United Kingdom** · Haworth UK Ltd. · Tel. +44 2073 241 360
- USA** · Haworth Inc. · One Haworth Center · Tel. +1 6163 933 000

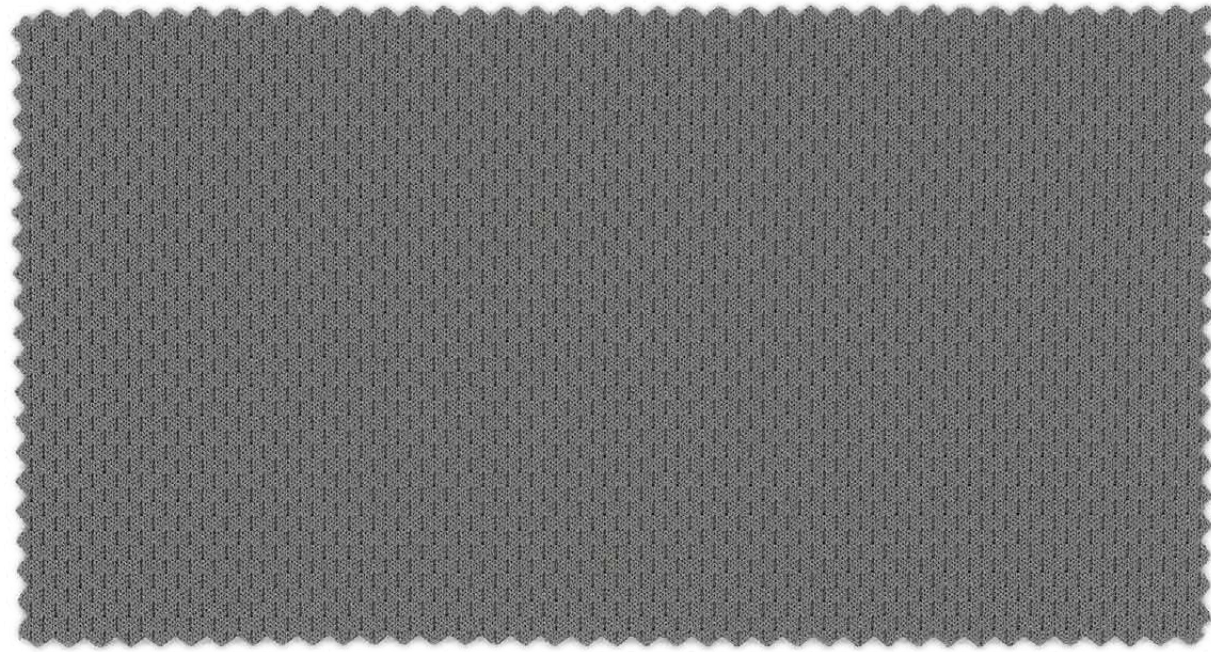
www.haworth-europe.com | www.haworth.com | www.haworth-asia.com

Price group **1**

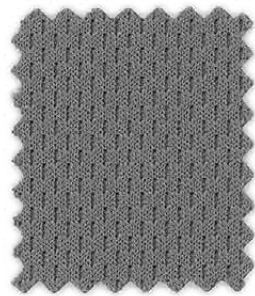


DH.SCA22 0000

Collection 22 | Price group 1



22/0011



22/0011



22/1078



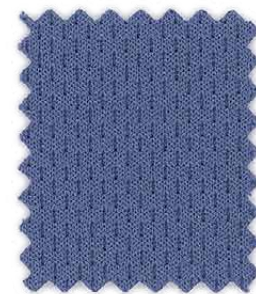
22/3036



22/4089



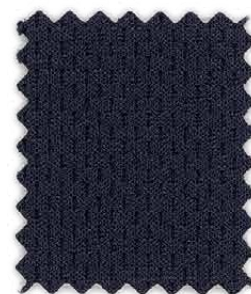
22/8056



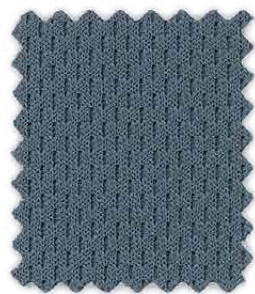
22/6061



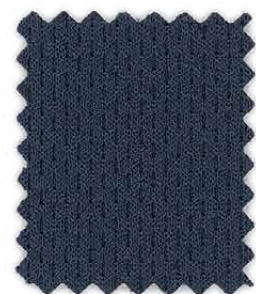
22/6062



22/6065



22/7031



22/6057



22/0025



22/0999